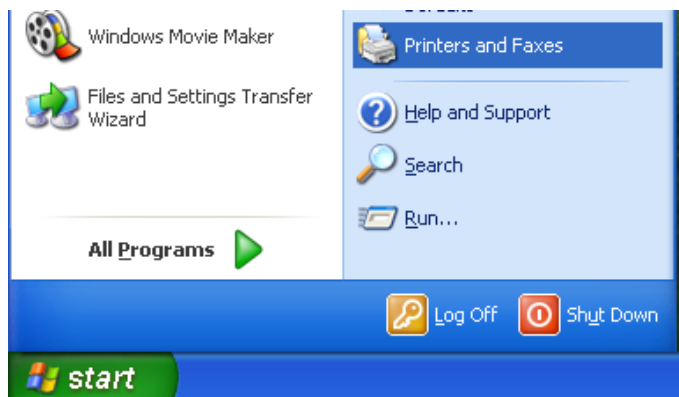
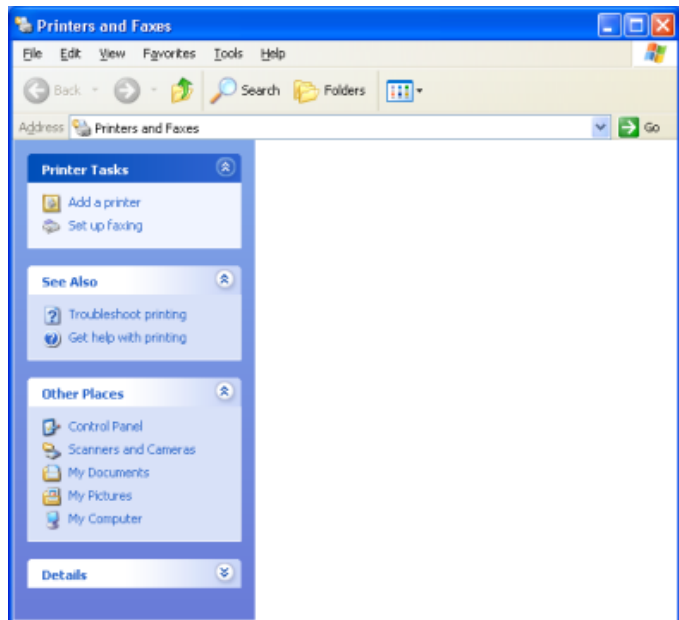


How to install a printer in the FEB library:

Before you start, make sure you have internet access with your internet browser.

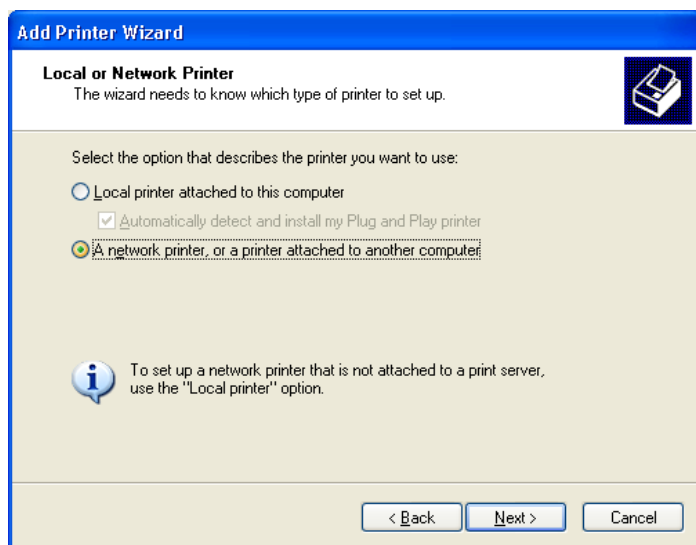


Click on the start button
> go to control panel
> go to printers and faxes



here you can see a list of installed printers
> click on add printer

The "Add printer wizard" will appear, click on "Next"
Now, on this screen select "Network printer" and click "Next"



Click on "specify this printer and fill in this path:
[\\ghumprt2.ghum.kuleuven.ac.be/pebibbalie](http://ghumprt2.ghum.kuleuven.ac.be/pebibbalie)

Click next and if asked for, fill in the username and Password:

Username: guest
PW: blanco

Click Finish to end the installation
Now the printer is installed!